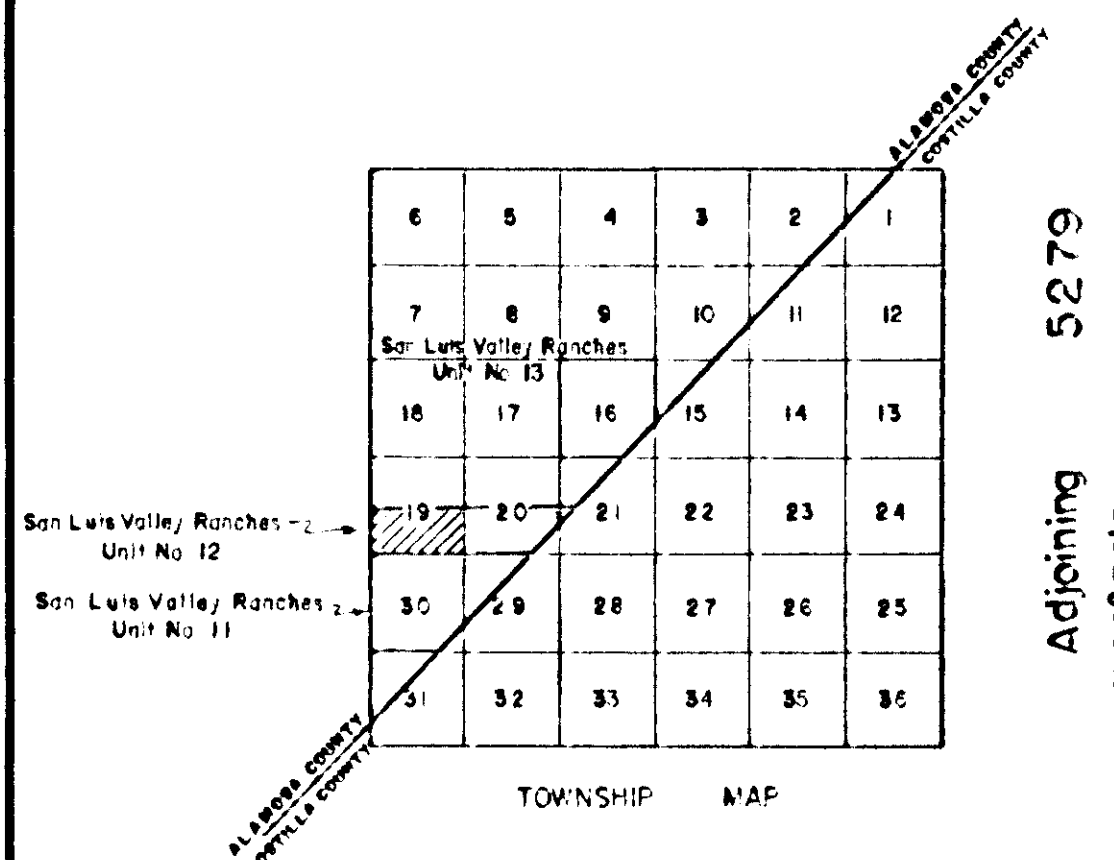
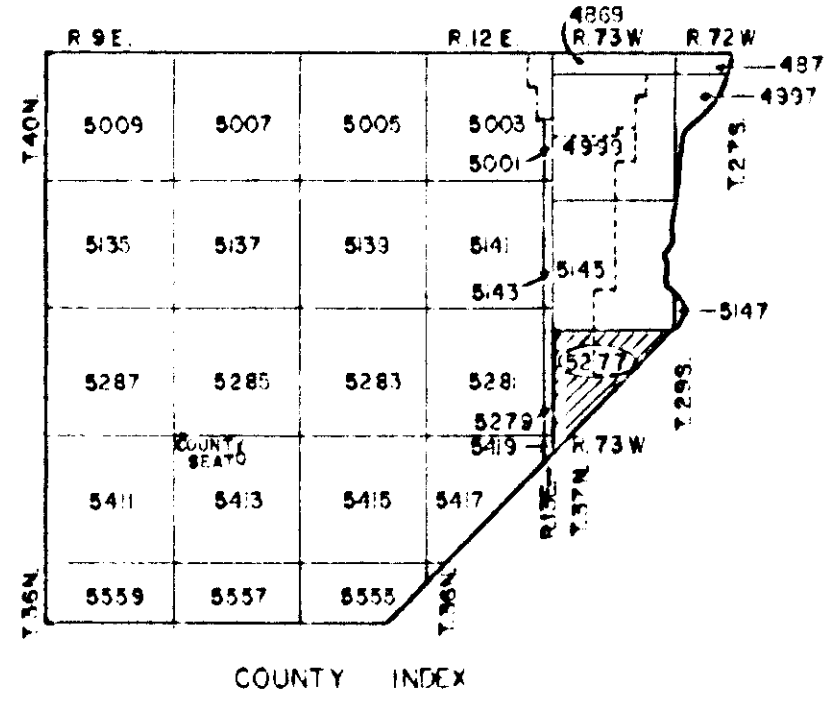


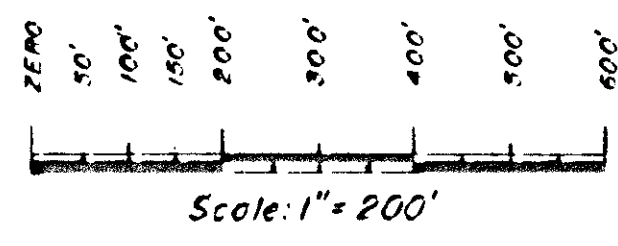
ALAMOSA COUNTY

DRAWN BY	J.A.F.	DATE	6-13-75
CHECKED BY		DATE	
REVISED			
Date	By	Remarks	
6/13/80	J.A.F.	Update	
7/21/81			
11/17/03	J.A.M.		

Adjoining 5277

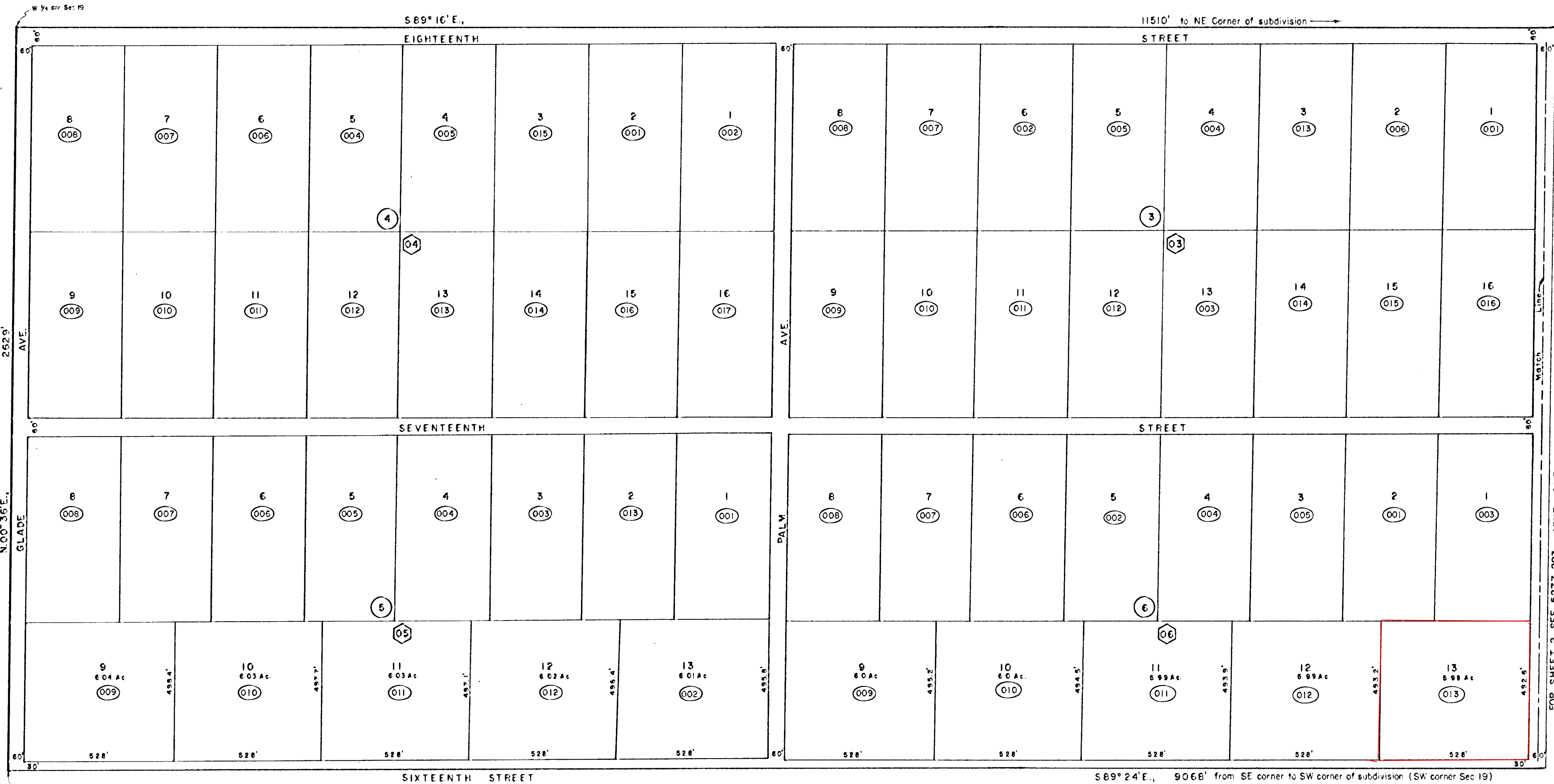


NOTICE
 THIS MAP IS FOR ASSESSMENT PURPOSES ONLY. IT IS NOT NECESSARILY ACCURATE BY SURVEYING STANDARDS. DO NOT USE FOR LEGAL CONVEYANCE.



SEE LEGEND ON SHEET-A

DAVIS ENGINEERS SERVICE, INC.
 DEL. NORTE, COLORADO 81301



Adjoining SAN LUIS VALLEY RANCHES—UNIT No. 11
 SEE 5277 301

All lots are 330' x 660' and contain 5.00 acres except where otherwise shown.

Description:
 The south one half of Section 19 and that part of the south one half of Secs 20 & 21 lying west of the Alamosa - Costilla County line, T. 29 S., R. 73 W., 6th P.M.

5277 193
 (AMENDED REPLAT)
 SAN LUIS VALLEY RANCHES - UNIT No. 12
 SHEET 1 OF 2

FOR SHEET 2 SEE 5277 203 VINE AVE.