

ALAMOSA COUNTY

Date	By	REVISION	Remarks
2/8/79	J.A.F.	Update	
6/17/81	"	"	"
11/25/82	"	"	"
6/22/83	"	"	"
7/8/85	"	"	"
12/2/86	"	"	"
11/2/89	J.A.M.	"	"

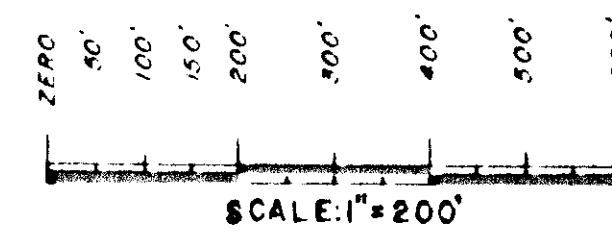
R1E	R12E	R12E	R12E	R12E
8009	8007	8006	8003	8000
8135	8137	8139	8141	8143
8287	8285	8283	8281	8279
8411	8413	8415	8413	8411
8559	8557	8555	8553	8551

COUNTY INDEX

6	5	4	3	2	1
7	8	9	10	11	12
13	14	15	16	17	18
19	20	21	22	23	24
25	26	27	28	29	30
31	32	33	34	35	36

TOWNSHIP MAP

NOTICE
THIS MAP IS FOR ASSESSMENT PURPOSES ONLY. IT IS NOT NECESSARILY ACCURATE BY SURVEYING STANDARDS. DO NOT USE FOR LEGAL CONVEYANCE.

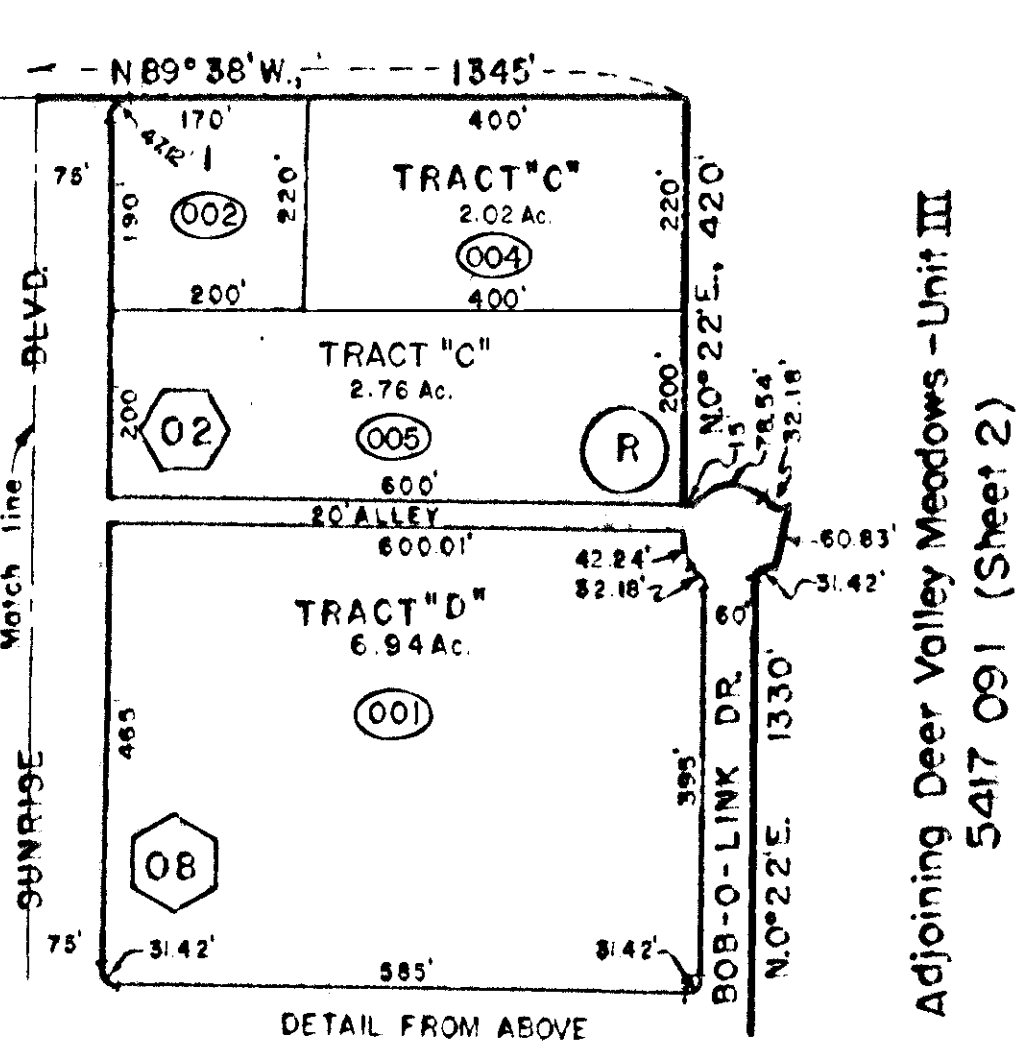


SEE LEGEND ON SHEET A

DAVIS ENGINEERS & SURVEYORS, INC.
P.O. BOX 1078, COLORADO SPRINGS, CO. 80901



For more detail see plats on file in the office of the County Clerk.



5417 080

A PORTION OF SECTIONS 7, 8, 9, 17 & 18
T. 37 N., R. 12 E., N.M.P.M.
DEER VALLEY MEADOWS - UNIT III
SHEET 1 OF 3