

Directions below were obtained using Bing Maps (a bit better than Google maps in this case). We modified the last steps based on our onsite experience and comments from others attempting to find the property. Remember, cell phones do work (except the 3G part may not, if you are using cell phone navigation, be sure to cache the map prior to leaving hwy 550).

The next several pages after this first page are maps we made. They will be best if printed in color, but b/w will work if you are a good map reader. The inserts are blow ups of the final stretch.

There are two entrances. The first one is the official deeded easement for roads. The second one is along the fence easement. Originally we only knew about the second entrance. Research of county records and maps allowed discovery of the main entrance. To reiterate, this area is remote!

First Entrance:

- Starting from intersection of 550 and 96, heading north on 96 6.2 mi
- 1. Depart NM-96 toward CR-496 1.6 mi
- 2. Turn right onto CR-496 2.4 mi
Keep left to stay on CR-496
- 3. Keep straight onto NM-496 / CR-496 (due north) 1.0 mi
- 4. Turn left onto Camino Olivas 0.4 mi
- 5. Bear right onto Calle de Banco 0.5 mi (note: this might be mis-named, might still be Camino Olivas). Ignore the “PRIVATE ROAD SIGN” At the end of this stretch you come to a clearing on the right (see maps below). On your left is a dirt road heading south. Turn left onto this road
- 6. Continue south for about 2000 feet (0.4 miles). At the fork go right. Past the mobile on left.
- 7. In about 300 feet past the mobile you have entered the property. The road turns into a private drive that ends at the fence at other end of property (about 600 feet away).

GENERAL ROAD MAP 1

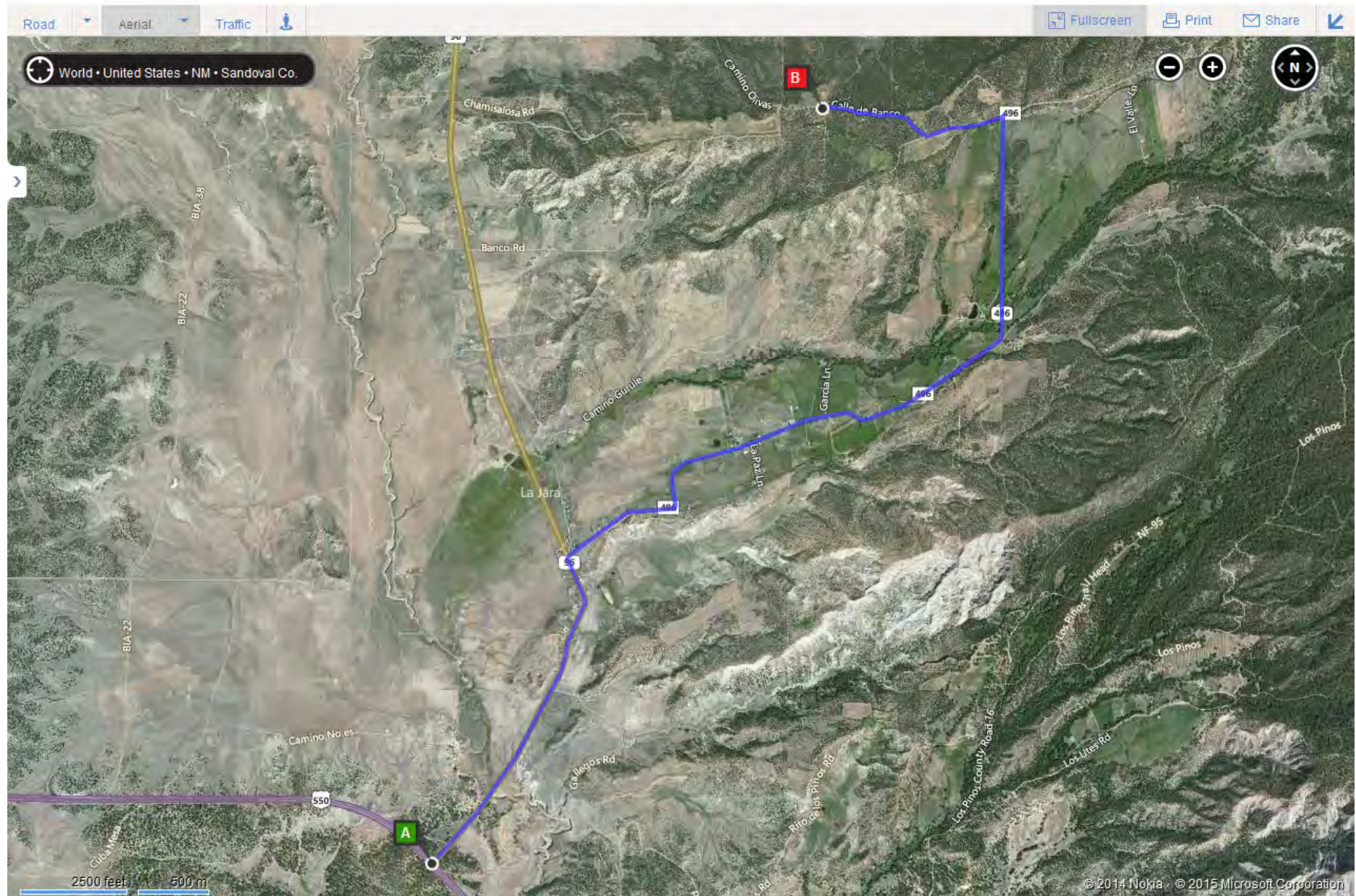
Lands of Olivas Trust, ... x Bing Maps x Bing Maps x Directions from 36... x 36.067365, -106.985... x Directions from 36... x NM-96 W to Cam ... x

www.bing.com/maps/?v=2&cp=36.111907~-106.956353&lvl=18&sty=h&q=36.111907%2C-106.956353&form=LMLTCC# Search

WEB IMAGES VIDEOS MAPS NEWS MORE

bing

Sign in 53

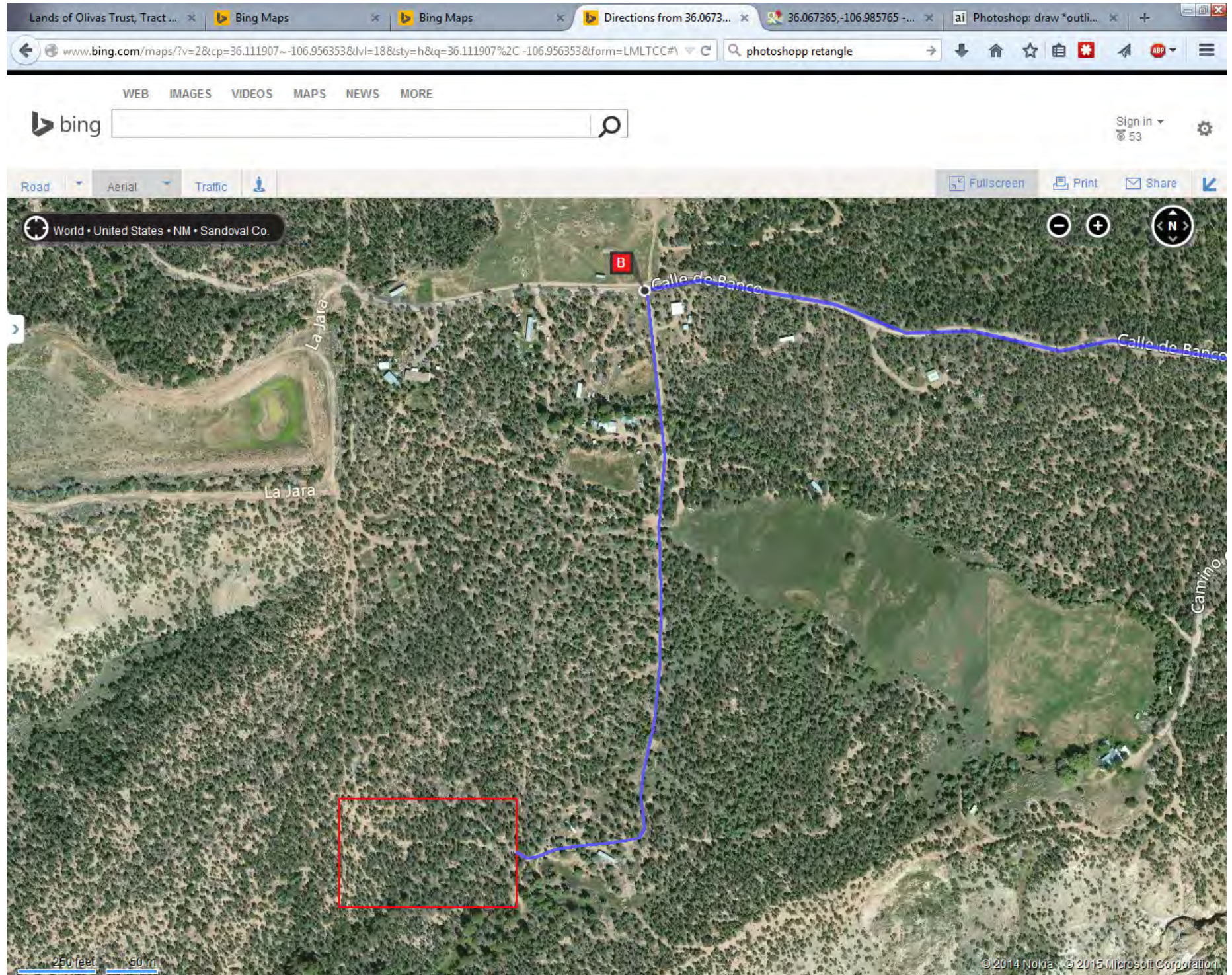


ROAD MAP 2 – CLOSER TO DESTINATION

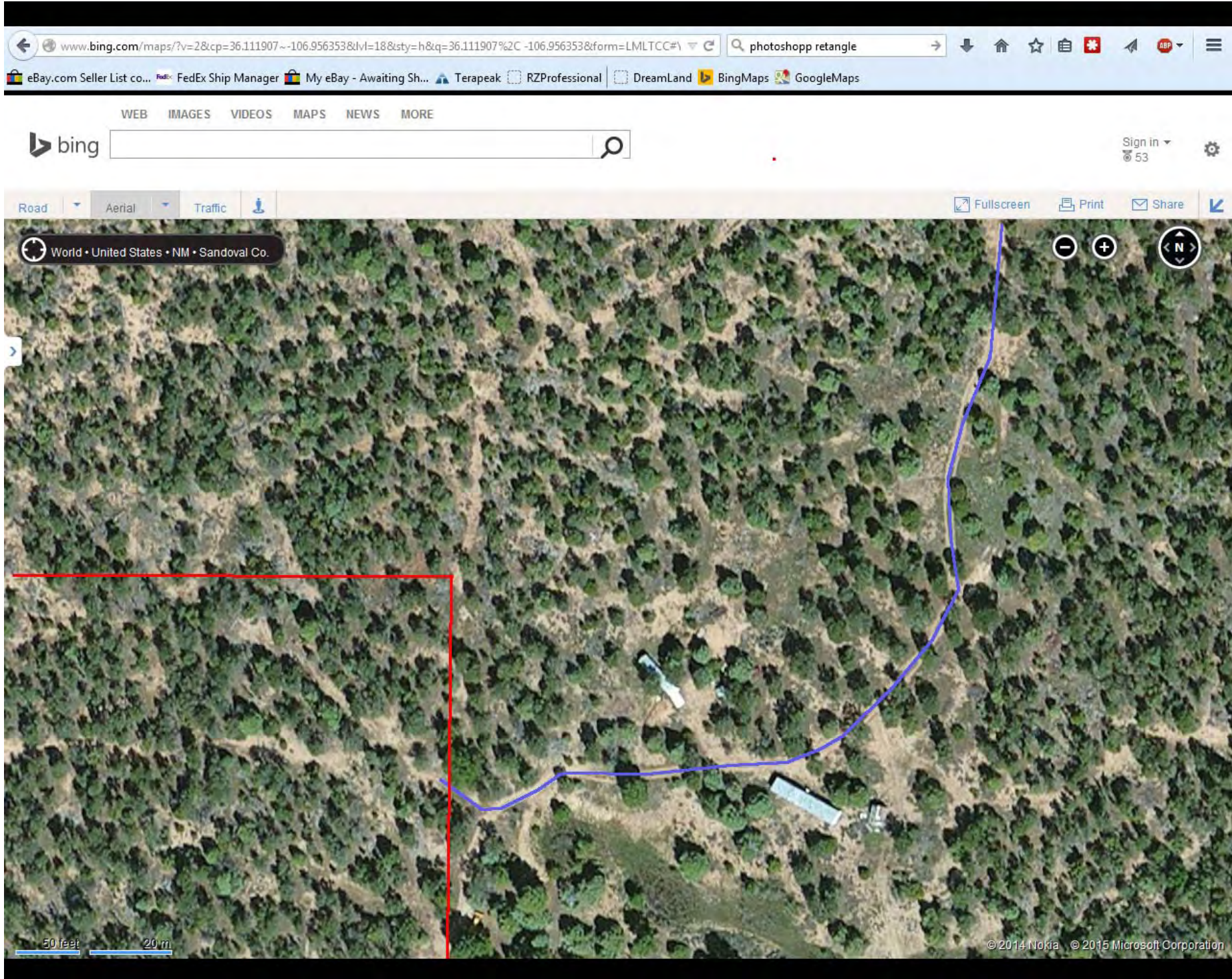
The screenshot displays a Bing Maps interface with several browser tabs open at the top, including "Lands of Olivas Trust, Tract...", "Bing Maps", "Directions from 36.0673...", "36.067365,-106.985765...", and "How do you draw a rect...". The address bar shows the URL "www.bing.com/maps/?v=2&cp=36.111907~-106.956353&lvl=18&sty=h&q=36.111907%2C-106.956353&form=LMLTCC#". The search bar contains the text "photoshopp retangle".

The map interface includes navigation controls such as "Road", "Aerial", and "Traffic" views, along with "Fullscreen", "Print", and "Share" options. The location is identified as "World • United States • NM • Sandoval Co.". The map shows a satellite view of a rural area with a blue route plotted. The route starts at a red "B" marker and ends at a red square. Key roads labeled include "Camino Duran Rd", "Camino Olivas", "Calle de Rancho", "Camino Olivas", "Camino Gurule", "Camino Montoya", "Garcia Ln", and "La Parilla". Highway markers for "96" and "496" are visible. A scale bar at the bottom left indicates "1000 feet" and "250 m". Copyright information at the bottom right reads "© 2014 Nokia © 2015 Microsoft Corporation".

ROAD MAP 3 – ZOOMED – LAST PART OF ROUTE



INSERT 1 – CLOSEUP – FINAL PART OF ROUTE



Second Entrance:

The next several pages after this first page are maps we made. They will be best if printed in color, but b/w will work if you are a good map reader. The inserts are blow ups of the final stretch.

- Starting from intersection of 550 and 96, heading north on 96 6.2 mi
- 1. Depart NM-96 toward CR-496 1.6 mi
- 2. Turn right onto CR-496 2.4 mi
Keep left to stay on CR-496
- 3. Keep straight onto NM-496 / CR-496 (due north) 1.0 mi
- 4. Turn left onto Camino Olivas 0.4 mi
- 5. Bear right onto Calle de Banco 0.7 mi (note: this might be mis-named, might still be Camino Olivas). Ignore the “PRIVATE ROAD SIGN” Near end of this stretch you will come to a gate just before an abandoned trailer (on the right). Drive around the gate on the left, past the gravel pile. At the end of the black road (about 150 feet past the gate) you will see a dirt “ranch” road heading south (left) along a fence line (see maps below).
- 6. Continue south on the “fence line” road, past the house. After traveling about 850 feet you will arrive a Y. Take the right fork, continuing south.
- 7. In about 1200 feet. It terminates at the fence surrounding your destination. There are some fence making materials near the corner post. You can easily walk across the fence a few feet to your left.)

GENERAL ROAD MAP 4

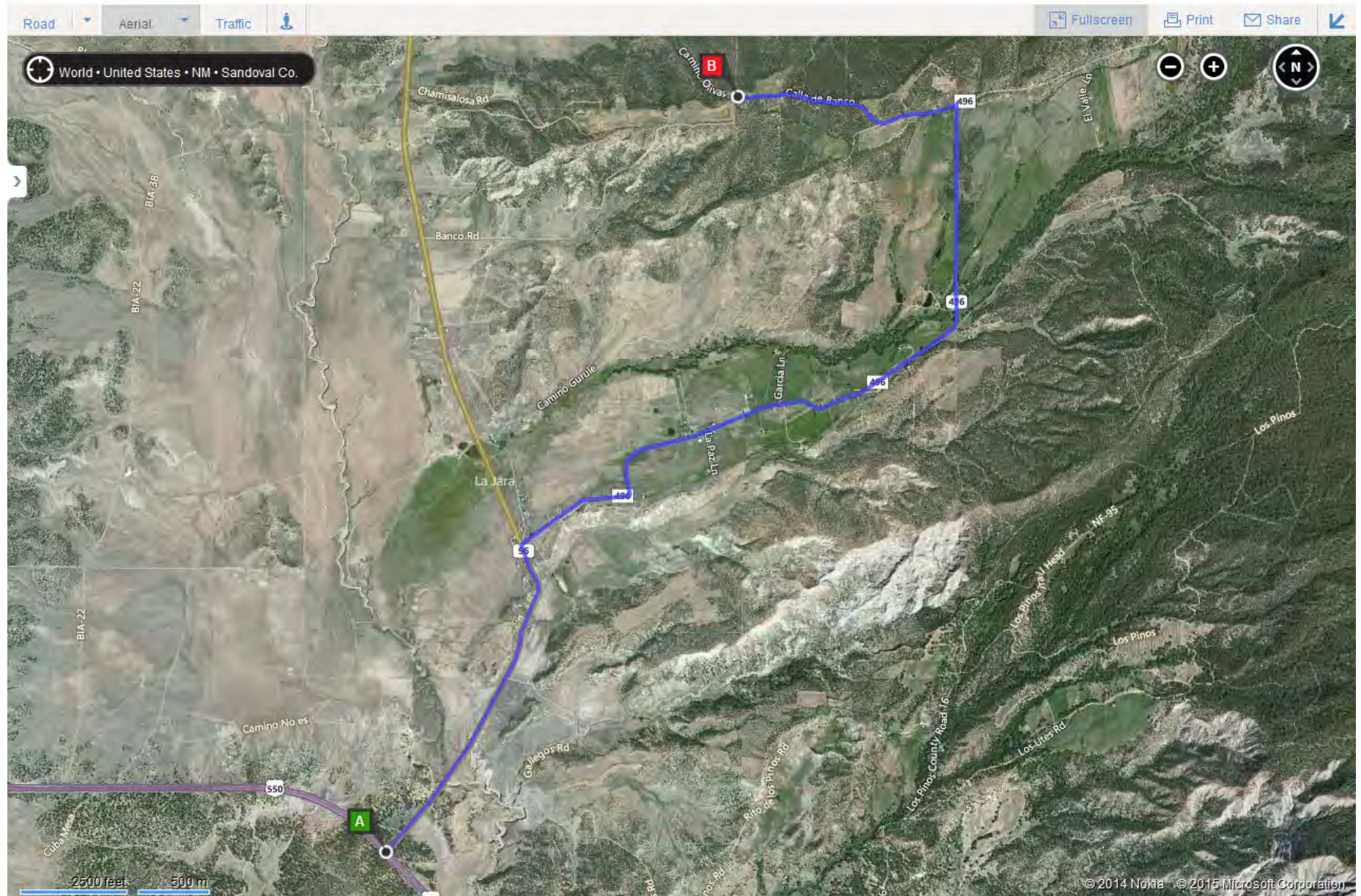
Lands of Olivas Tr... x Bing Maps x Bing Maps x Directions fro... x 36.067365, -106... x Directions fro... x NM-96 W to C... x 31.517432, -110... x +

www.bing.com/maps/?v=2&cp=36.111907~-106.956353&lvl=18&sty=h&q=36.111907%2C~-106.956353&form=LMLTCC# Search

WEB IMAGES VIDEOS MAPS NEWS MORE

bing

Sign in 53



ROAD MAP 5 – CLOSER TO DESTINATION

www.bing.com/maps/?v=2&cp=36.111907~-106.956353&lvl=18&sty=h&q=36.111907%2C-106.956353&form=LMLTCC#

WEB IMAGES VIDEOS MAPS NEWS MORE

bing

Sign in 53

Road Aerial Traffic

World • United States • NM • Sandoval Co.

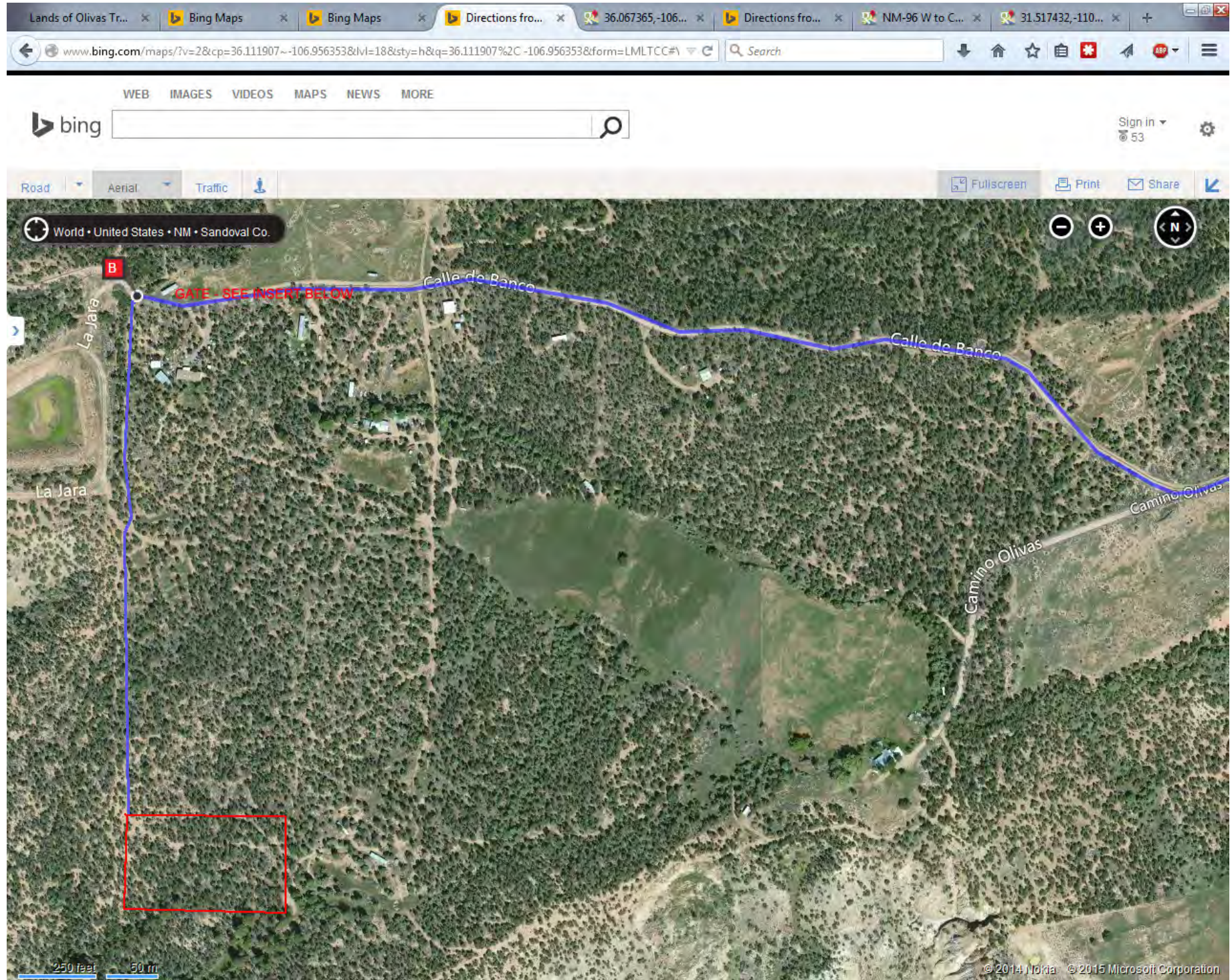
Camino Duran Rd, Camino Olivas, Calle de Banco, Camino Olivas, Camino Gurule, Camino Montoya, Camino Valdez, La Jara, Banco Rd, Garcia Ln, La Paz Ln, Camino Valdez, Nalleln Ln

496 496 496 96 496

1000 feet 250 ft

© 2014 Nokia © 2015 Microsoft Corporation

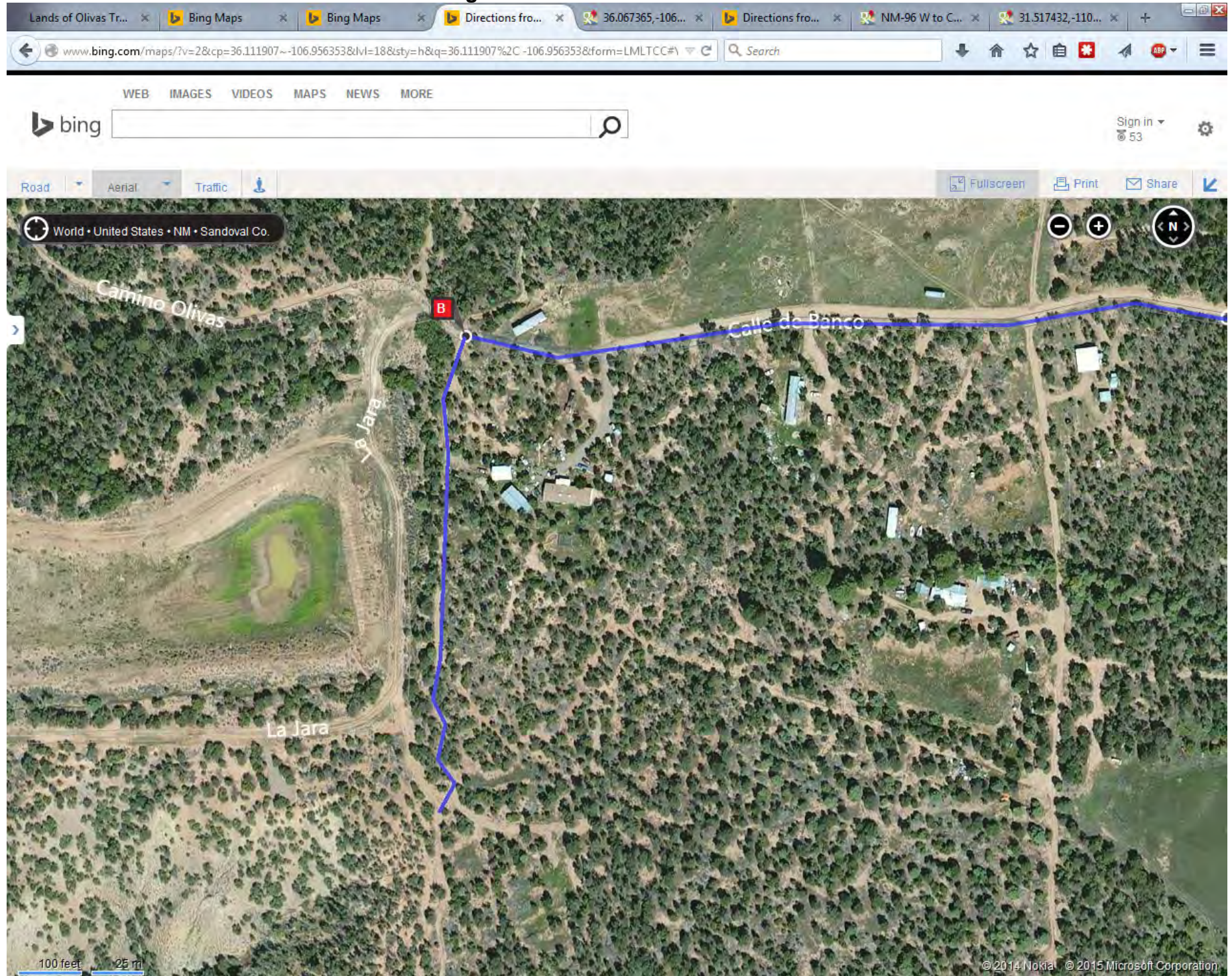
ROAD MAP 6 – ZOOMED – LAST PART OF ROUTE



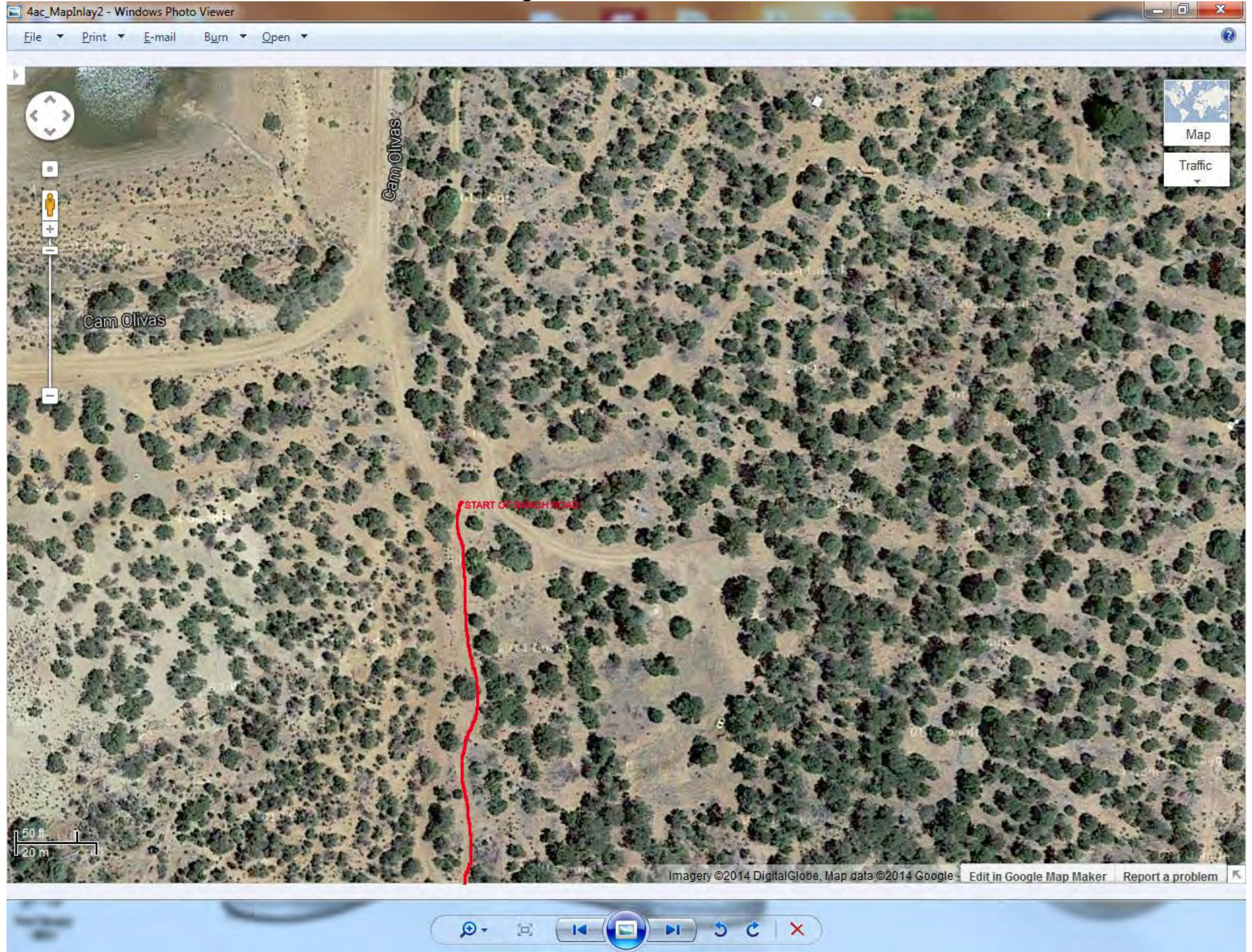
INSERT 2 – TOP OF LAST LEG – NOTE GATE – Drive around left side of gate, past gravel pile, south on dirt road after junk mobile



INSERT 3 – START OF ACCESS ROAD – Along fence easement



INSERT 4 – START OF RANCH ROAD – Vehicle with ground clearance needed for last 1200 feet



INSERT 5 – LAST STRETCH. At the barbed wire fence you have arrived. A gate will eventually be needed for vehicle access

