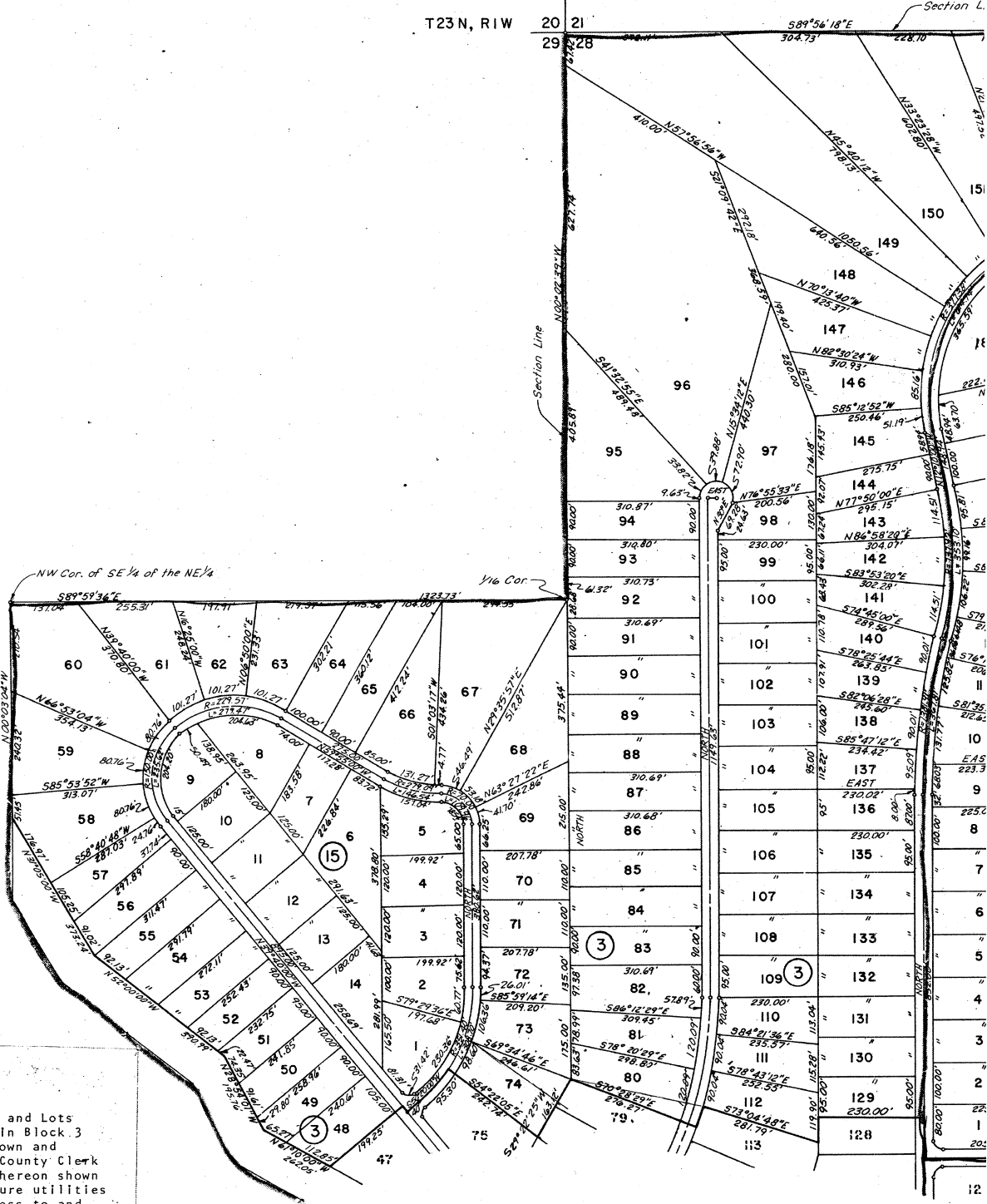


T23N, R1W

20 21  
29 28

Section L.



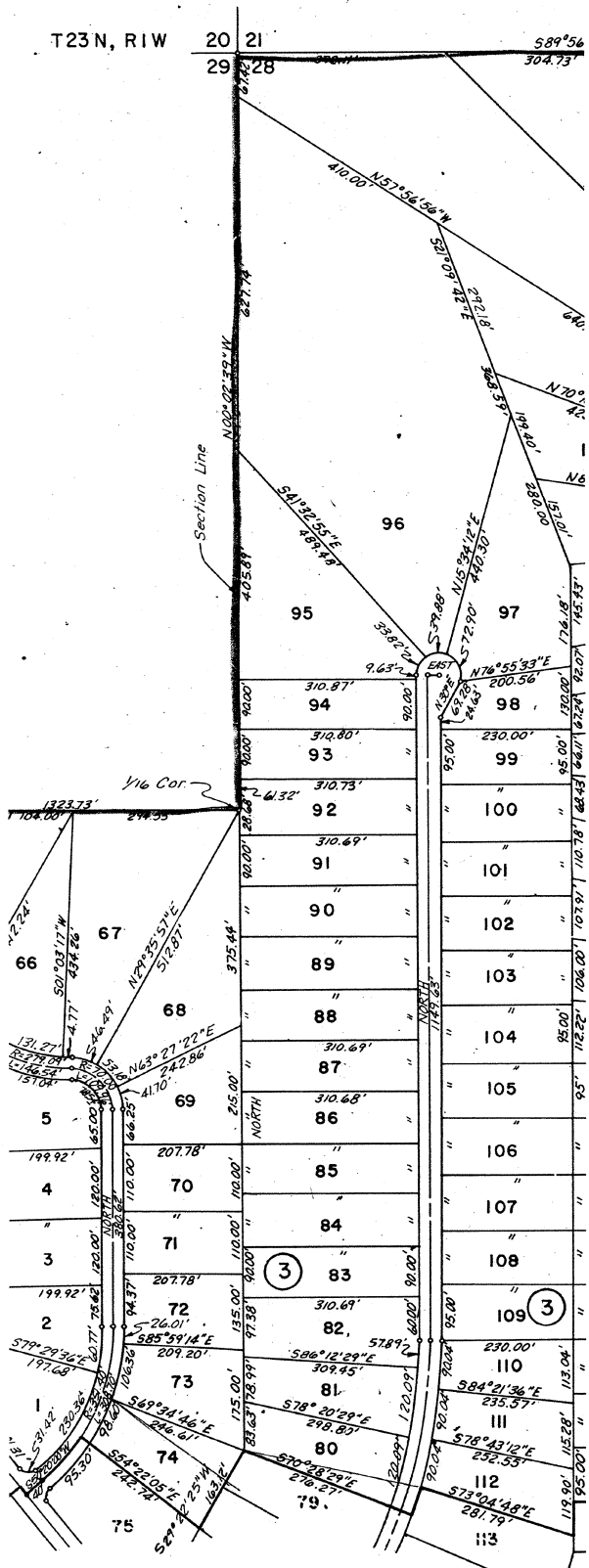
and 16 and Lots  
ive, In Block 3  
is shown and  
the County Clerk  
now hereon shown  
future utilities  
gress to and  
accordance with  
remove the  
this plat do  
and easements  
utility easement

12

T23 N, RIW

20 21

589°56'  
304.73'



Section Line

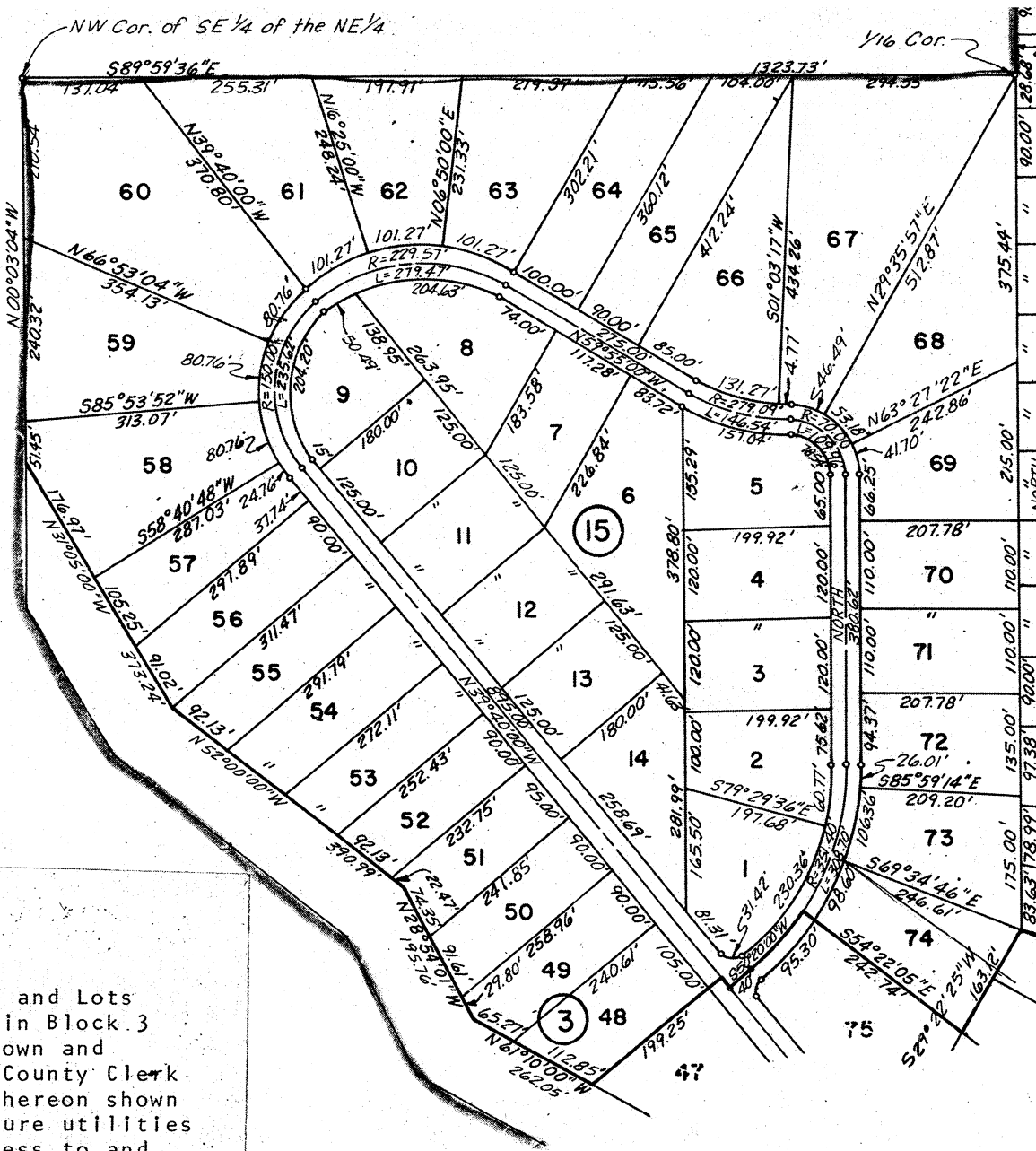
V16 Cor.

3

3

19

19



and 16 and Lots  
 five, in Block 3  
 is shown and  
 the County Clerk  
 now hereon shown  
 of future utilities  
 to regress to and  
 accordance with  
 to remove the